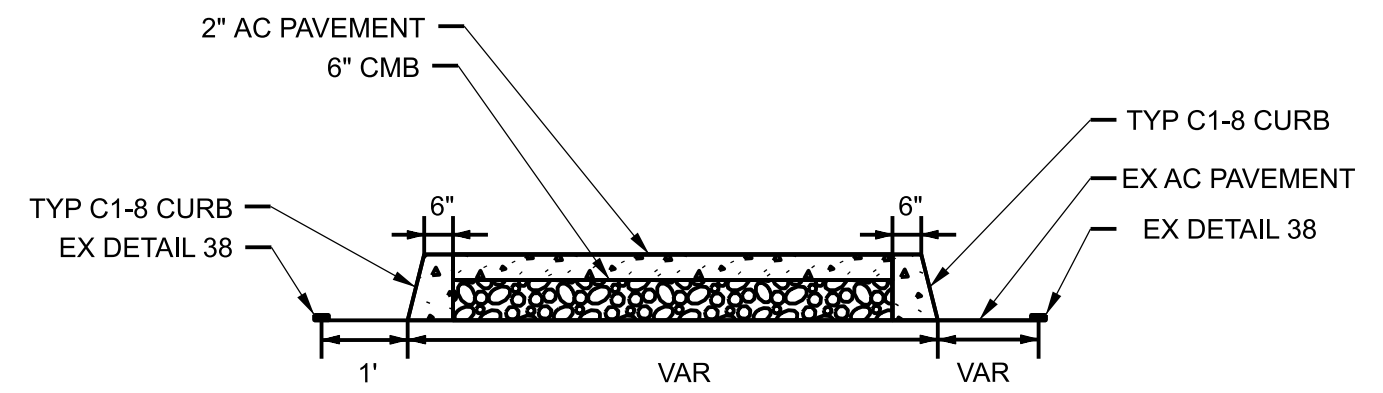
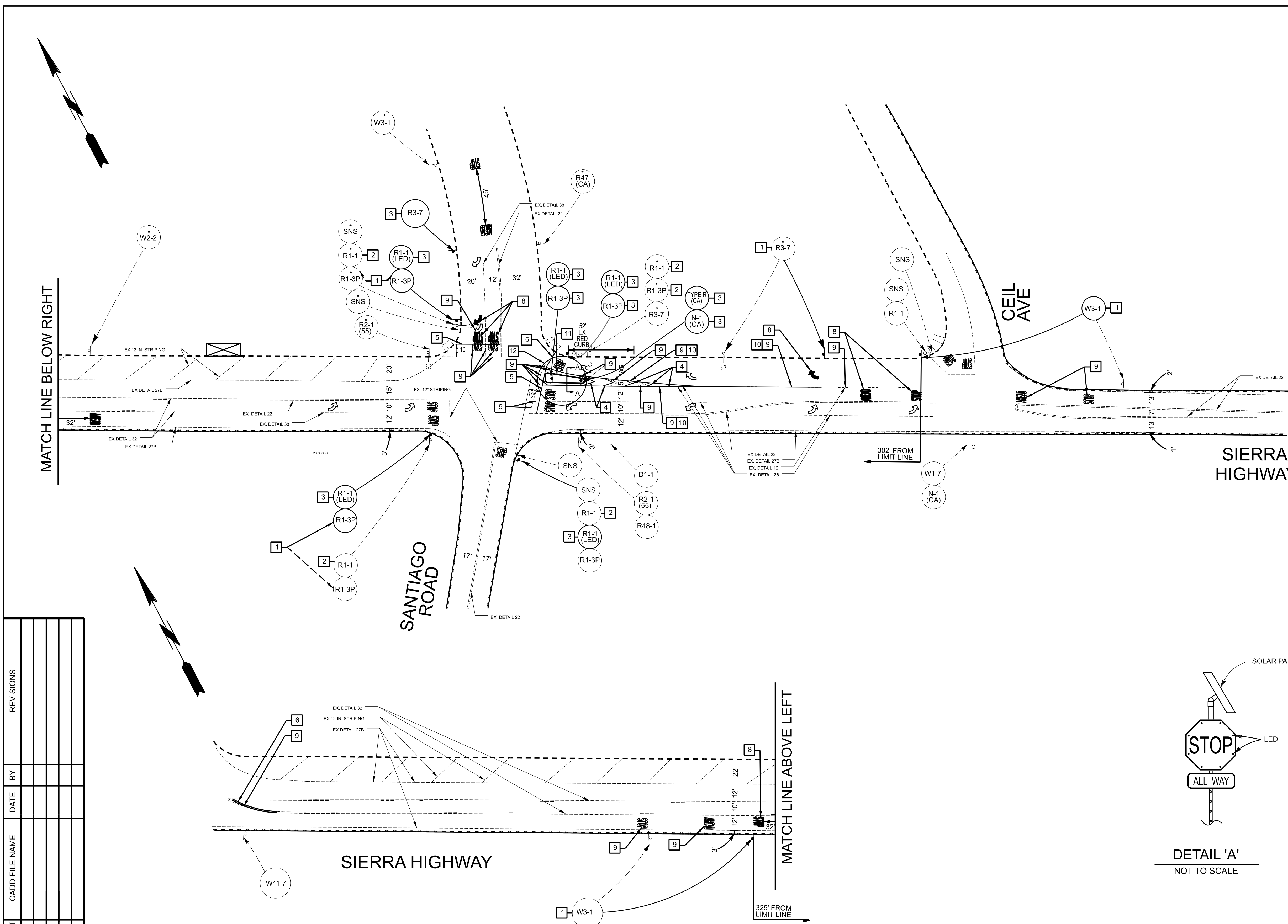


**GENERAL NOTES:**

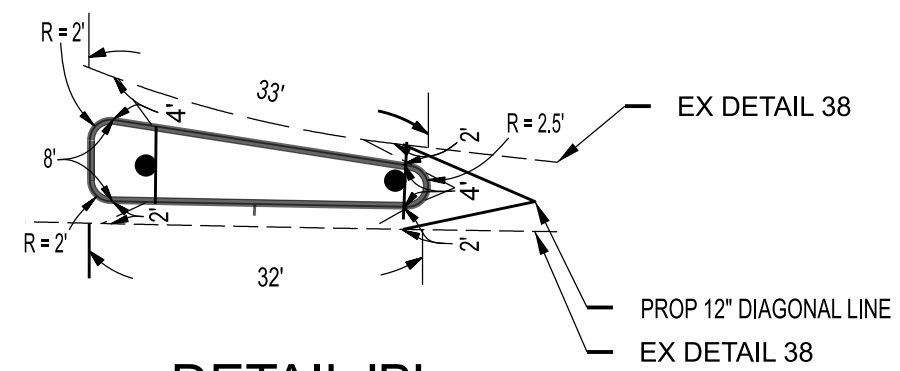
1. ALL TRAFFIC LINES AND PAVEMENT MARKINGS SHOWN SHALL BE INSTALLED WITH THERMOPLASTIC BY THE AGENCY, UNLESS OTHERWISE NOTED.
2. ALL CONFLICTING LINES AND MARKINGS SHALL BE REMOVED BY GRINDING.
3. ALL TURN ARROW MARKINGS SHALL BE TYPE IV (L OR R) UNLESS OTHERWISE NOTED.
4. ALL LANE STRIPING AT INTERSECTION APPROACHES WITHOUT CROSSWALKS OR LIMIT LINES SHALL END 10 FEET FROM THE EXTENSION OF THE INTERSECTING CURB LINE.
5. ALL SIGNING SHOWN HEREON SHALL BE INSTALLED, RELOCATED, OR REMOVED BY THE CONTRACTOR, UNLESS OTHERWISE NOTED.
6. LOCATIONS OF PROPOSED SIGNS ARE SHOWN TO SCALE ON THE PLAN, UNLESS OTHERWISE NOTED.
7. CURB DESIGN AS PER 2012 EDITION OF STANDARD PLAN FOR PUBLIC WORKS CONSTRUCTION.
8. FOR R1-1 (LED). SEE DETAIL 'A'.

**CONSTRUCTION NOTES:**

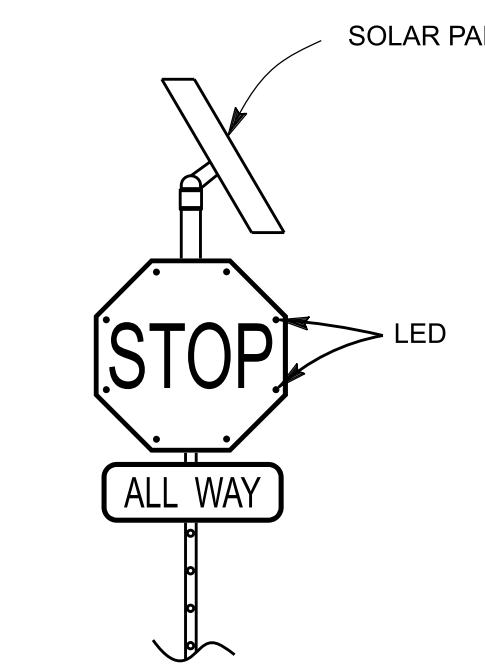
- 1 RELOCATE SIGN(S).
- 2 REMOVE SIGN(S) AS SHOWN.
- 3 SIGN PANEL(S).
- 4 12" WHITE CHEVRONS AT 15' SPACING.
- 5 12" STRIPING.
- 6 DETAIL 22.
- 7 REMOVE EXISTING SIGNS AS SHOWN.
- 8 PAVEMENT MARKINGS AS SHOWN.
- 9 REMOVE CONFLICTING STRIPING/PAVEMENT MARKING.
- 10 DETAIL 38.
- 11 MEDIAN ISLAND WITH TYPE C1-8 CURB. SEE SECTION A-A.
- 12 SEE DETAIL 'B' FOR MEDIAN ISLAND DIMENSIONS.



**SECTION A-A**  
NOT TO SCALE



**DETAIL 'B'**  
NOT TO SCALE



**DETAIL 'A'**  
NOT TO SCALE

NO.	PROJECT	CADD FILE NAME	DATE	BY	REVISIONS

DRAWN BY  
M. BLANCO

SPOTTED BY  
M. MOULIC

SUPERVISED BY  
M. MOULIC

REVIEWED BY  
M. MOULIC

**SIGN LEGEND**  
\* - SIGN MOUNTED ON STREET LIGHT POLE

# PRELIMINARY PLANS



SUBMITTED: CIVIL ENGINEER NO. C69033

BY: \_\_\_\_\_ DATE: \_\_\_\_\_

RECOMMENDED:

BY: \_\_\_\_\_ DATE: \_\_\_\_\_

APPROVED:  
MARK PESTRELLA, DIRECTOR OF PUBLIC WORKS

BY: \_\_\_\_\_ DATE: \_\_\_\_\_

ASSISTANT DEPUTY DIRECTOR

LOS ANGELES COUNTY  
DEPARTMENT OF PUBLIC WORKS  
TRAFFIC SAFETY AND MOBILITY DIVISION

**SIGNING AND STRIPING PLAN**  
**SIERRA HIGHWAY**  
**AT SANTIAGO ROAD**

SHT. 1 OF 1    SCALE: 1"=40'    G.D. 3295 - R1