

# ACTON: 700 Propagation Maps

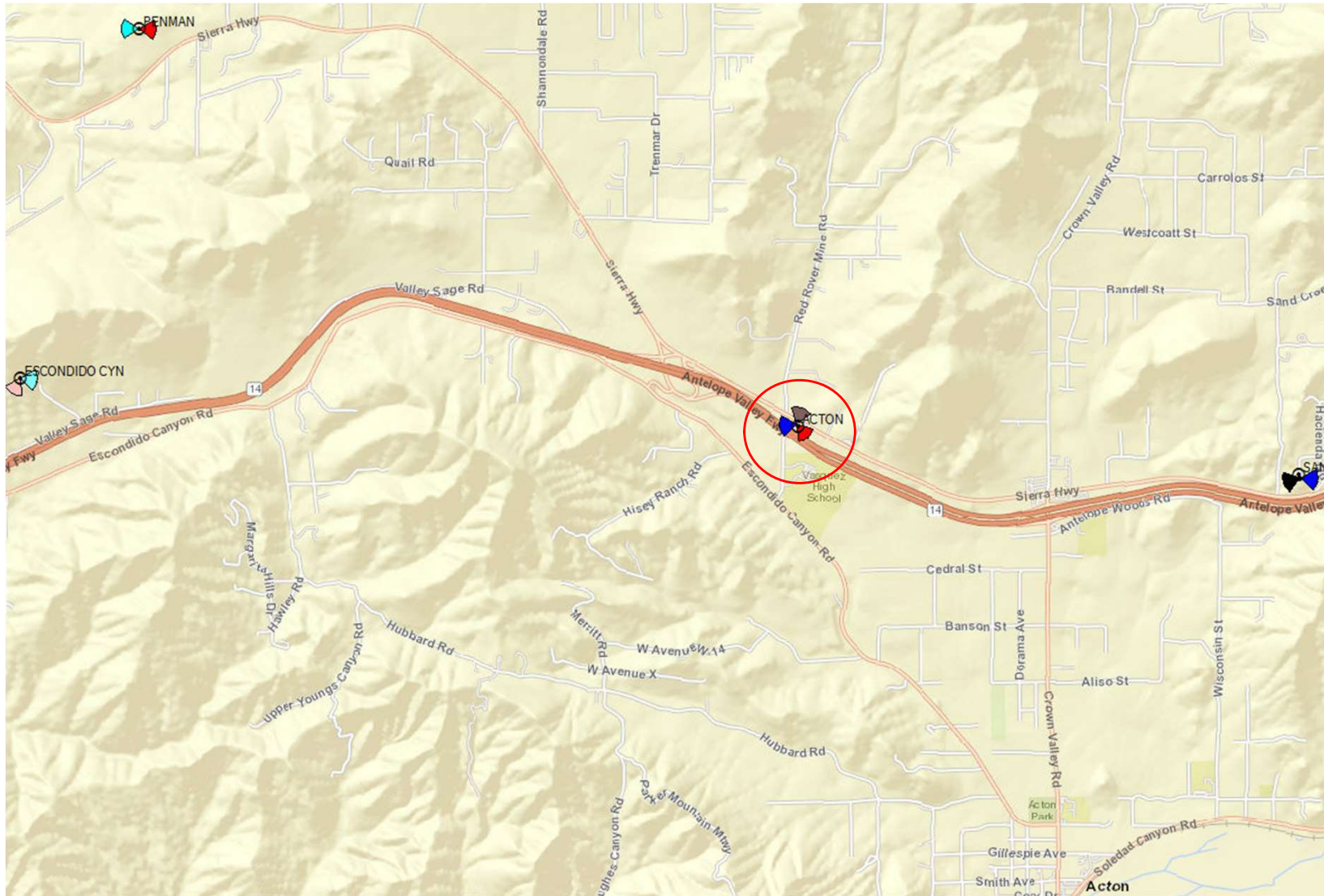
April 23, 2024

Propagation plots presented were generated using Atoll and estimates Verizon's expectations given the configuration (height, location, antenna type, etc) of the sites in the study. Building materials, thickness of walls, topography and terrain, and varying types and sizes of vegetation can affect the accuracy of the RF model's prediction.



Confidential and proprietary materials for authorized Verizon personnel and outside agencies only. Use, disclosure or distribution of this material is not permitted to any unauthorized persons or third parties except by written agreement.

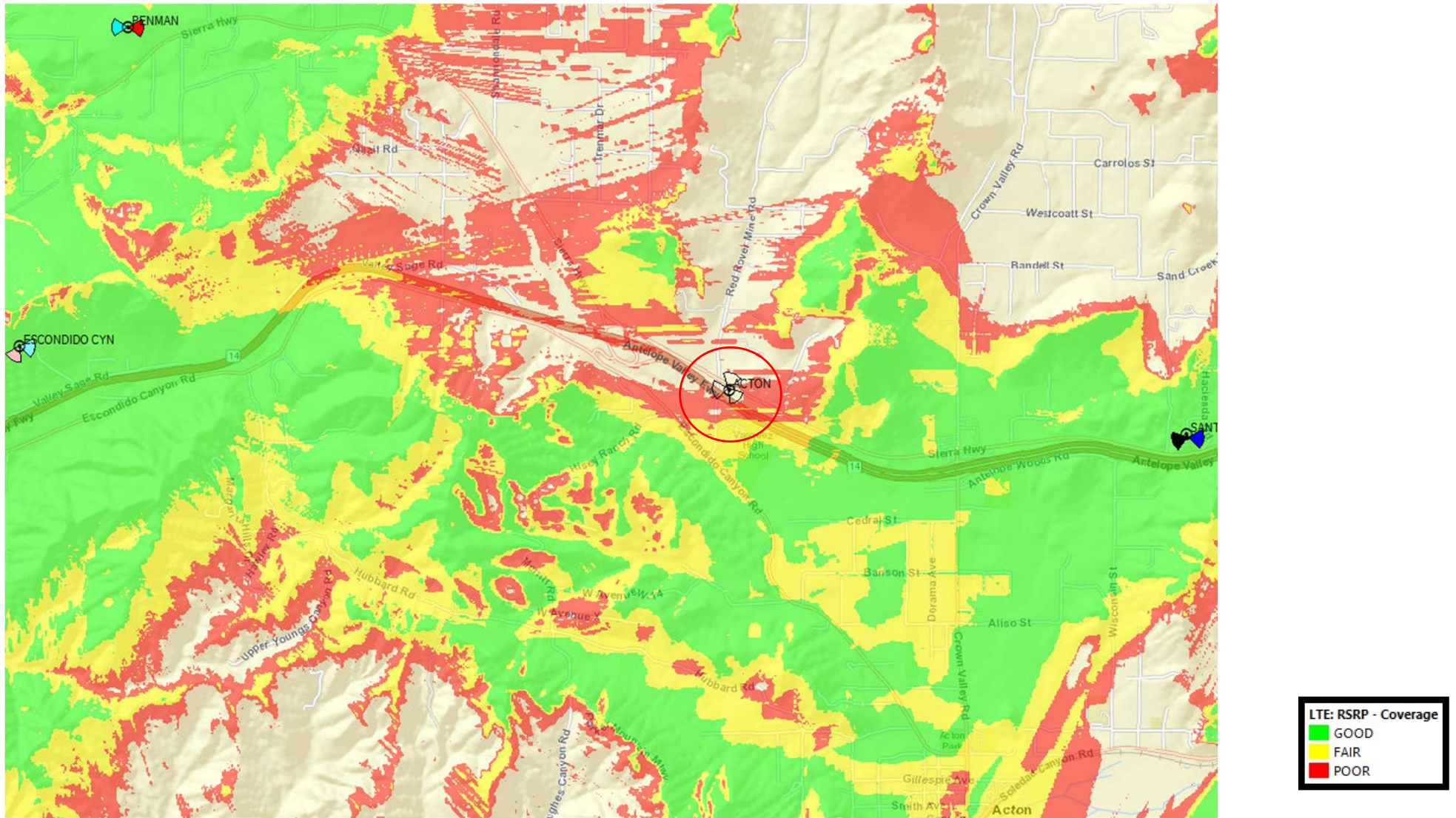
# Overview Map



Confidential and proprietary materials for authorized Verizon personnel and outside agencies only. Use, disclosure or distribution of this material is not permitted to any unauthorized persons or third parties except by written agreement.



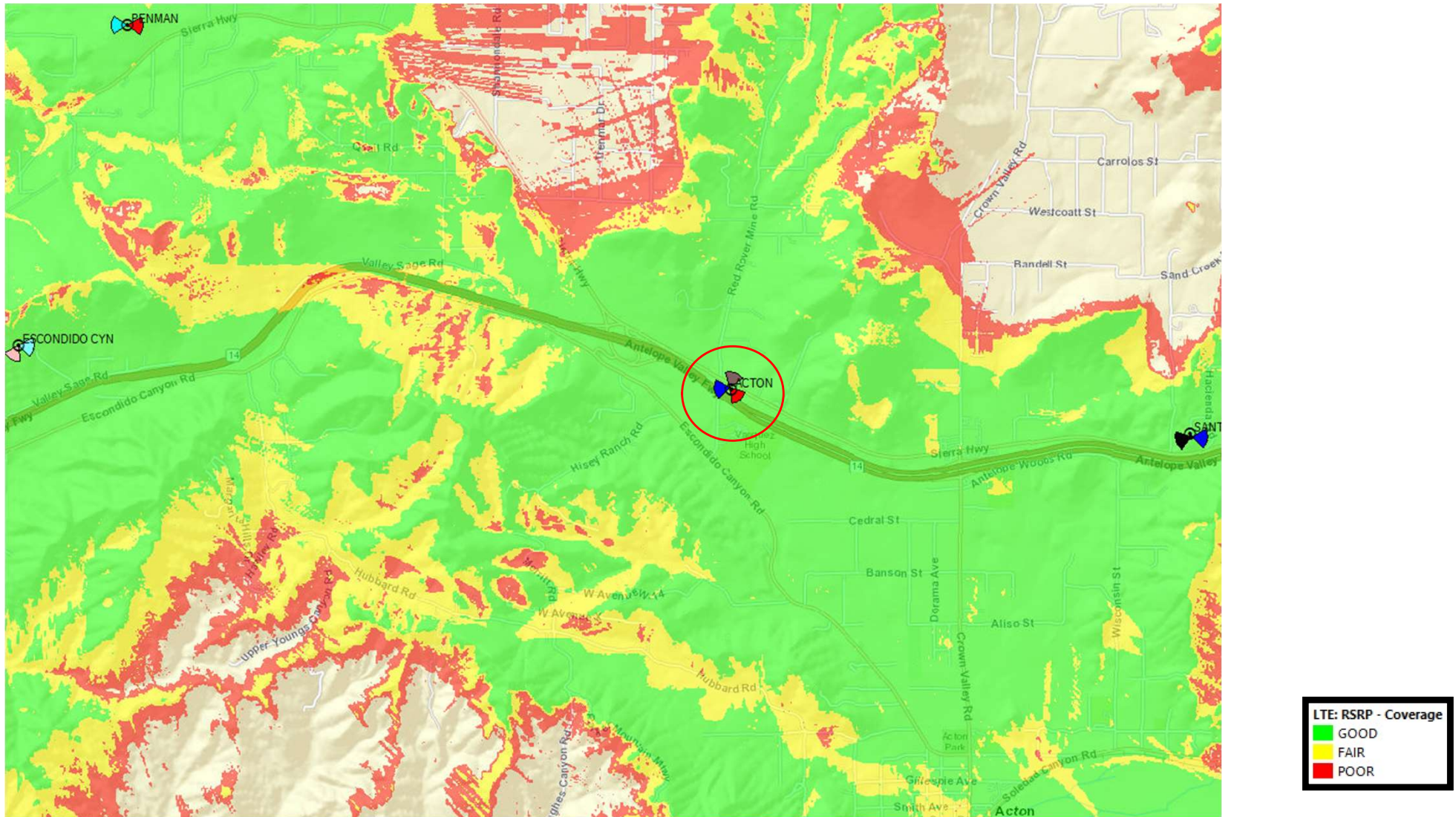
# Verizon Coverage without ACTON



Confidential and proprietary materials for authorized Verizon personnel and outside agencies only. Use, disclosure or distribution of this material is not permitted to any unauthorized persons or third parties except by written agreement.



# Verizon Coverage with ACTON @100' RAD(Current)



Confidential and proprietary materials for authorized Verizon personnel and outside agencies only. Use, disclosure or distribution of this material is not permitted to any unauthorized persons or third parties except by written agreement.



