

Angeleno Battery Energy Storage System Project

April 21, 2023

Project Location

- Avantus proposes to construct the Angeleno Battery Energy Storage System (BESS) on up to 68 acres of private property located along Soledad Canyon Road, approximately one mile west of the Southern California Edison (SCE) Vincent substation, within unincorporated Los Angeles County, California.

Project Size and Capacity

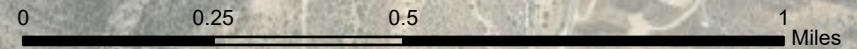
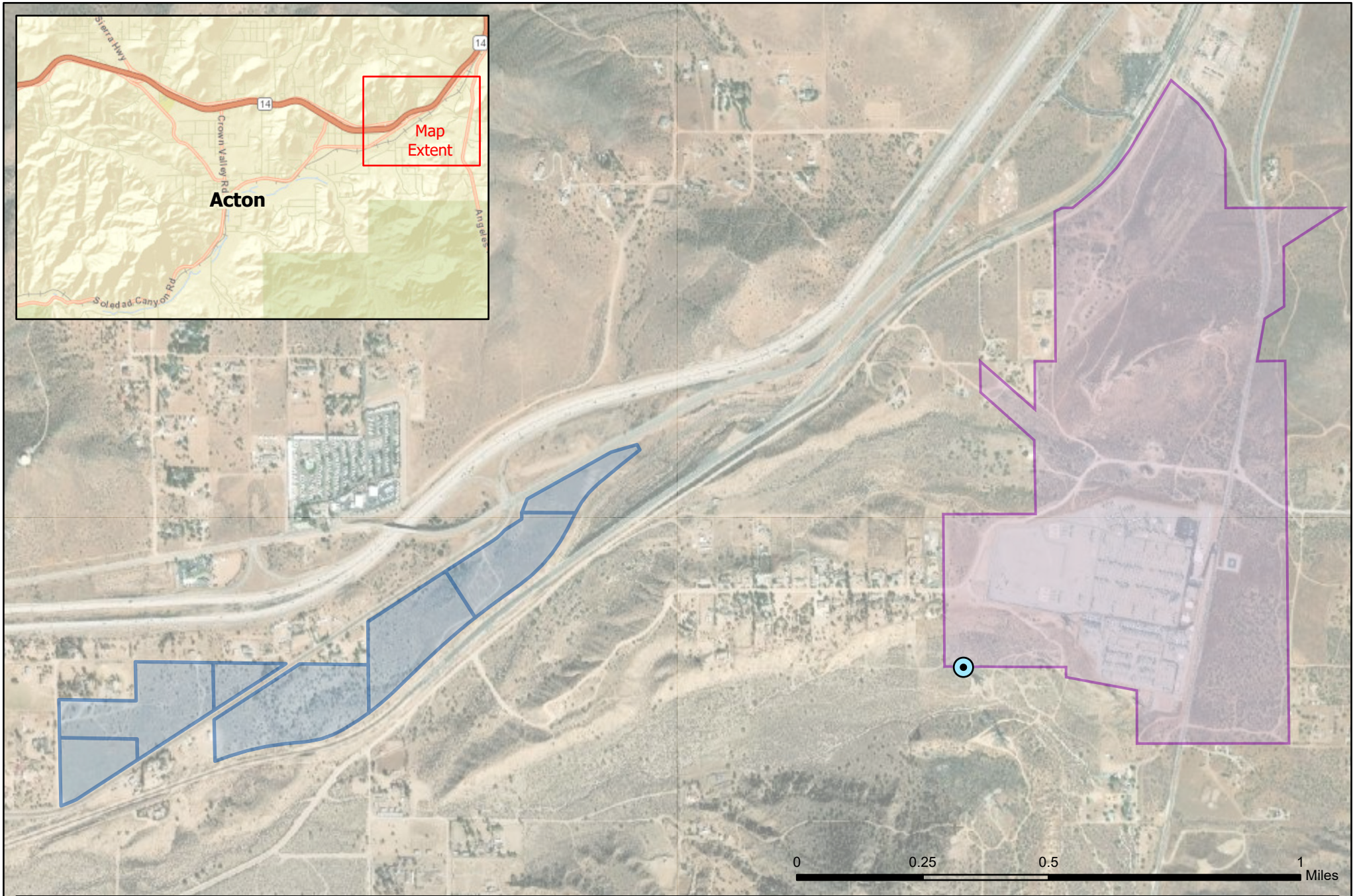
- The BESS would be constructed with up to 1,150 Megawatts (MW) of Battery Storage
- The BESS would likely have a 4-hour duration -- 4,600 Megawatt hours (MWh) of Capacity

Interconnection and Major Project Components




- The BESS would connect to the SCE Vincent Substation with a 500kV Transmission Line
- The BESS would include batteries, transformers, inverters, a project switchyard, and appurtenant facilities (e.g., access roads and gates, water tanks, etc.).

Current Project Status

- Conducting baseline technical studies
- Preparing draft project application materials
- Initiated coordination with:
 - Los Angeles County Planning Department
 - Los Angeles County Fire Department



Angeleno BESS Project
1.15 GW Scenario, Location Map
Los Angeles County, CA

-  Proposed Point of Interconnection
-  Project Parcels (68 acres)
-  Southern California Edison (SCE) Vincent Substation

