



2022 Parks Needs Assessment Plus (PNA+)*

** Previously referred to as the Regional and Rural Edition (RRE)*

October 2022

This project is funded by the Los Angeles County Regional Park and Open Space District (RPOSD).

Background and Overview



Parks Needs Assessment

Parks Needs Assessment

2016 (PNA)

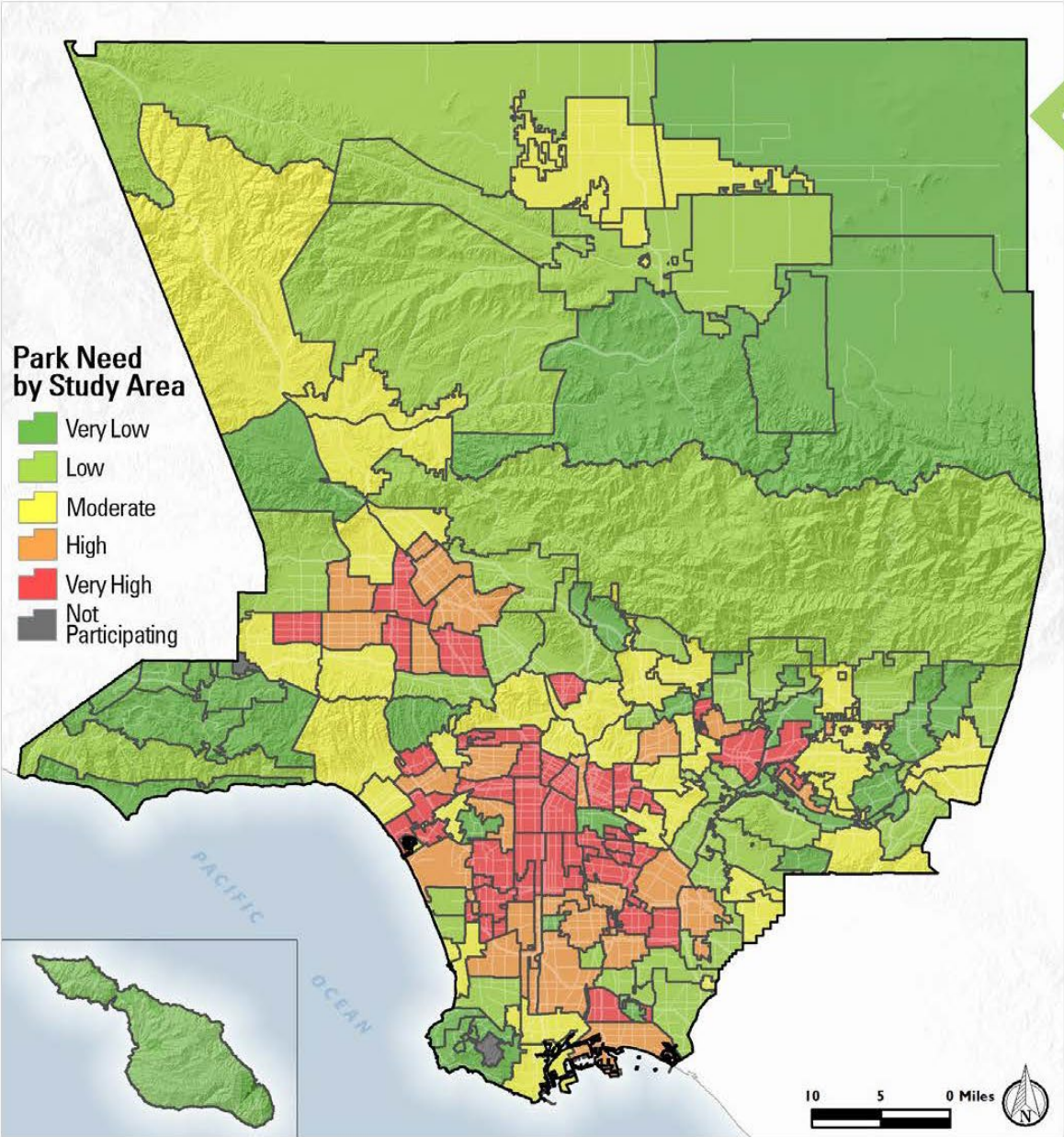
Regional Recreation

Rural Recreation

Conservation and Restoration

2022 Edition (PNA+)

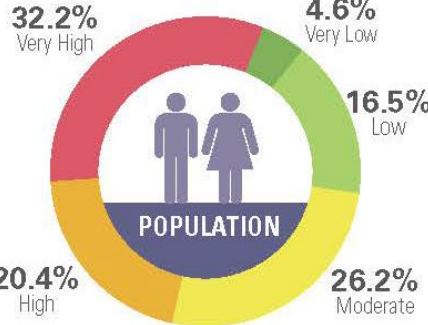
2016 Parks Needs Assessment (PNA)



PARK NEED

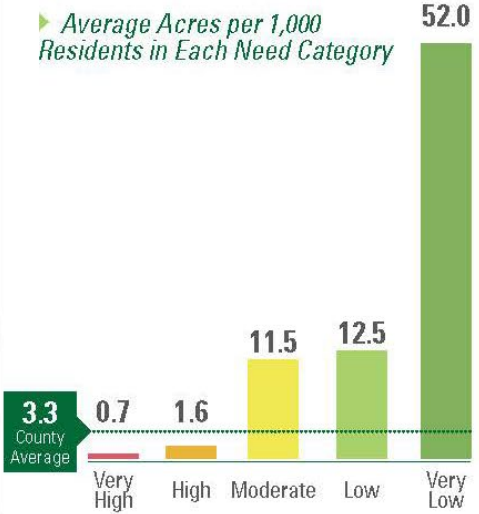
The results of the analysis of the park metrics were combined to determine an overall park need level for each Study Area. This approach creates a framework for assessing park need from a Countywide perspective.

Population in Each Need Category*



*0.1% Not Participating

Average Acres per 1,000 Residents in Each Need Category



Parks Needs Assessment (PNA+) Study Areas

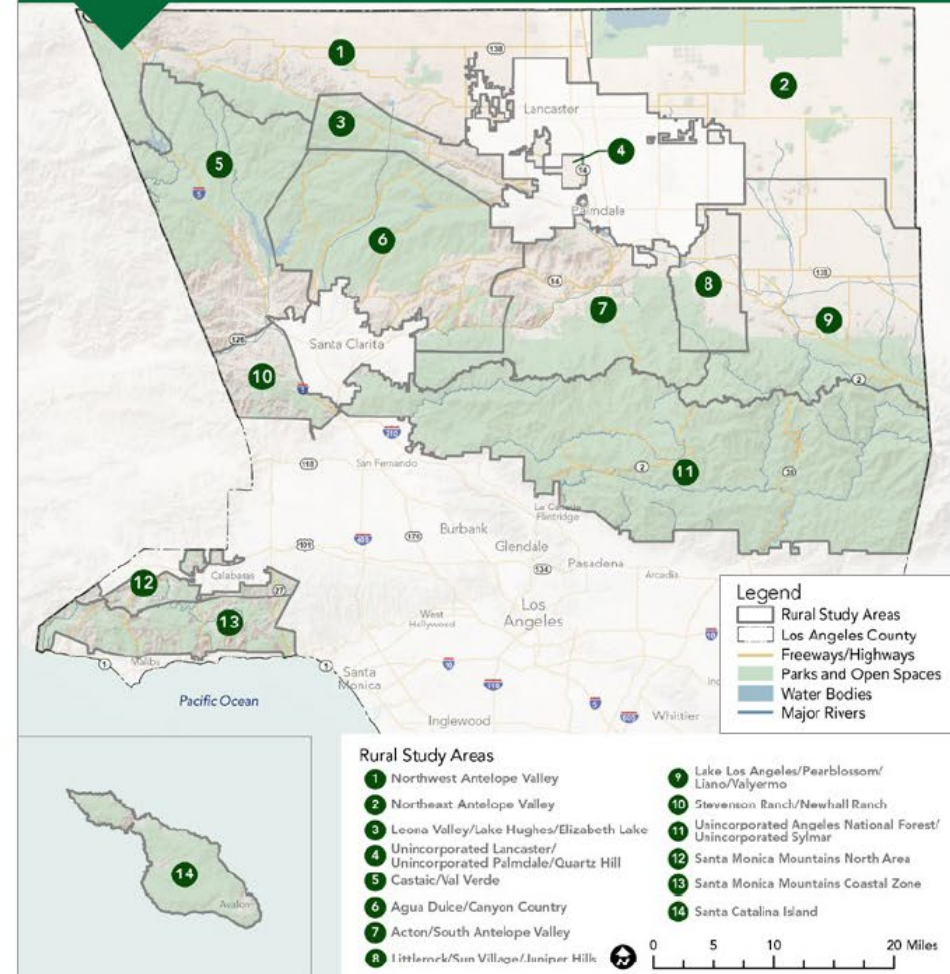
REGIONAL FOCUS

A comprehensive inventory and equity-driven analysis of REGIONAL parks and open space assets including regional recreational facilities, beaches and lakes, open spaces and natural areas, and trails. For this analysis, the County is divided into 11 Regional Study Areas which are consistent with the Planning Areas established as part of the Los Angeles County General Plan.



RURAL FOCUS

An examination of park needs in the RURAL areas of Los Angeles County using equity-driven methods and metrics. For this analysis, 14 Rural Study Areas are established, and they are located in the Antelope Valley, Santa Clarita Valley, Santa Monica Mountains, and Santa Catalina Island.



Expanding the Parks Needs Assessment

	2016 COUNTYWIDE PARKS NEEDS ASSESSMENT (PNA)	2022 PNA+	
	COUNTYWIDE	Regional Assessment	Rural Assessment
Focus	COUNTYWIDE	COUNTYWIDE	RURAL AREAS ONLY
Study Areas	188	11	14
Park Categories Included In Inventory and Analysis	<ul style="list-style-type: none"> » Local Parks » Regional Recreation Parks » Regional Open Space Inventoried, but not included in analysis: <ul style="list-style-type: none"> » Natural Areas 	<ul style="list-style-type: none"> » Regional Recreation Parks Regional Open Space and Natural Area refined into four categories: <ul style="list-style-type: none"> » Conservation Areas » Nature-based Recreation Areas » Regional Specialized Recreation Areas » Other Public and Semi-Public Open Space 	Rural Recreation Sites Including: <ul style="list-style-type: none"> » Local Parks » Regional Recreation Parks » Nature-based Recreation Areas
Park Amenities	Local Park Amenity Inventory and Condition Analysis	Regional Recreation Park and Nature-based Recreation Amenity Inventory and Access Analysis	Local Park, Regional Recreation Park and Nature-based Recreation Amenity Inventory and Access Analysis



2016 COUNTYWIDE PARKS NEEDS ASSESSMENT (PNA)


COUNTYWIDE

- » Park Land per 1,000 Residents
- » Park Access
- » Park Pressure
- » Population Density

Key Metrics

Park Access Modes Analyzed

Priorities Identified

 **Walking**
(10 minutes or 0.5 miles)

- Park Need Category by Study Area based on:**
- » Population Density
 - » Distance to a Park
 - » Park Acre Need

2022 PNA+

Regional Assessment


Rural Assessment


COUNTYWIDE


RURAL AREAS ONLY


- » Regional Park Land and Trail Miles per 1,000 Residents
- » Regional Park and Trail Access
- » Regional Site Visitorship Rates
- » Environmental Benefits and Burdens
- » Population Vulnerability


- » Rural Recreation Site Land per 1,000 Residents
- » Rural Recreation Site Access
- » Population Vulnerability


 **Walking**
(10 minutes or 0.5 miles)


 **Cycling**
(2.5 miles)


 **Driving**
(5 miles)

 **Public Transit**
(stop within 0.5 miles of entry)

 **Walking**
(10 minutes or 0.5 miles)

 **Cycling**
(2.5 miles)

 **Driving**
(5 miles and 10 miles)

 **Public Transit**
(stop within 0.5 miles of entry)

- » **Regional Recreation Priority Areas based on:**
 - » Social, Environmental, Transportation and Health Vulnerability
 - » Distance to Regional Recreation Sites
 - » Regional Site Visitorship Rates
- » **Environmental Conservation and Restoration Priority Areas**

- » **Priority Areas for Enhancing Rural Recreation based on:**
 - » Social, Environmental, Transportation and Health Vulnerability
 - » Distance to Rural Recreation Sites
 - » Distance to Rural Recreation Amenities
- » **Priority Project Types by Study Area**

Report Development Process



Project Timeline



**Spring 2020 –
Fall 2020**
*(on hold from
March – August
due to COVID-19)*

**Fall 2020 –
Winter 2020**

**Spring 2021 –
Fall 2021**

**Spring 2021 –
Summer 2021**

Fall 2021

Winter 2021

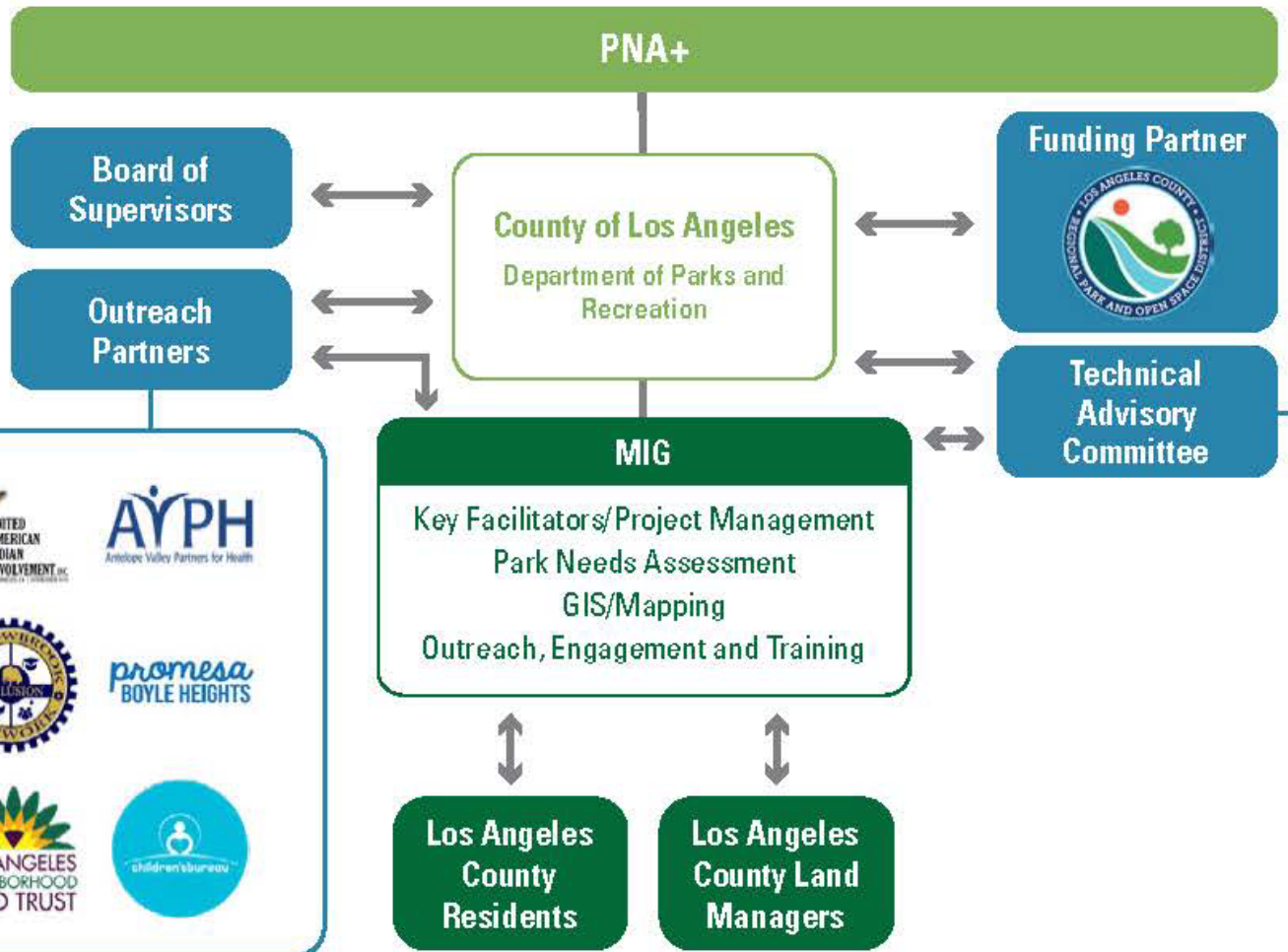
Fall 2022

Community Outreach Partners



STAKEHOLDER ENGAGEMENT

The preparation of the PNA+ involved extensive community engagement and outreach, required collaboration and coordination with many different agencies that operate throughout the County and included guidance and input from the Board of Supervisors, a Technical Advisory Committee and over twenty Community Partner organizations. Los Angeles County residents and land managers provided invaluable input that informed this report.



Technical Advisory Committee



Community Engagement Summary

11 WORKSHOPS	20 COMMUNITY PARTNERS	140+ OUTREACH EVENTS	400+ PARTICIPANTS IN WORKSHOPS AND DISCUSSIONS	5,000+ SURVEY RESPONDENTS	188,000+ SOCIAL MEDIA IMPRESSIONS
------------------------	---------------------------------	--------------------------------	--	-------------------------------------	---

we all need PARKS
REGIONAL AND RURAL EDITION OF THE COUNTYWIDE PARKS NEEDS ASSESSMENT
LOS ANGELES COUNTY DEPARTMENT OF PARKS AND RECREATION

2021
WE ALL NEED SPACE TO ROAM!
The Los Angeles County Department of Parks and Recreation is conducting a comprehensive study to understand and document the need for regional facilities like beaches and lakes, natural areas and open spaces, regional parks, and trails, and the park needs of the rural parts of the County.

CHOOSE AN AREA TO EXPLORE

- REGIONAL: LA County's beaches and lakes, natural areas and open spaces, regional parks, and trails.
- RURAL: Parks and recreational facilities in LA County's rural areas.



Informational Video

아외에서 시간을 보낼 때 다음 장소를 방문하는 것을 좋아한다.

we all need PARKS
Regional & Rural Edition 2021

COUNTYWIDE PARKS SURVEY

Please take a few minutes to share a little bit about your use of regional parks, natural areas, trails, and other regional amenities in LA County. Your answers will help us to better understand and meet park and recreation needs in our region!

Your responses will remain anonymous, even if you choose to provide your contact information at the end of the survey.

This is the first of a series of short surveys. For more information about the Regional and Rural Edition and future surveys, please sign up for our email list at the end of this survey.

Digital and Printed Surveys

Los Angeles Countywide Parks Needs Assessment @laccprneeds

How do you use, enjoy, and visit parks located in rural communities in the Antelope Valley (pictured), Santa Clarita Valley, Santa Monica Mountains, and Santa Catalina Island?

Let us know via our survey at new.maptionnaire.com/q/8buc8@wjr4cy

@laccounyparks @BRPOS

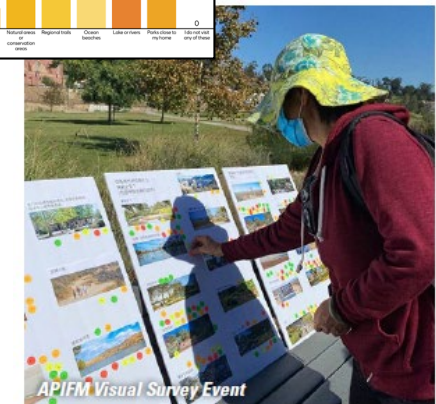
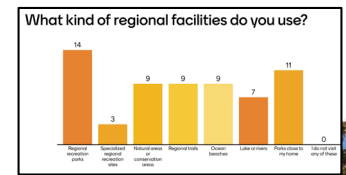
Los Angeles Countywide Parks and Recreation Needs Assessment
Submitted by Heidi Oros July 19

Please share! Our survey is still open - how can we make access to parks more equitable? How can we better provide parks for all of LA County's residents? Click the link below to share your thoughts. #laccprneeds #laccprneeds #laccprneeds

County of Los Angeles Department of Parks & Recreation
Trails L.A. County
Los Angeles County Regional Park and Open Space District... See More

How do you use parks?

Social Media Posts



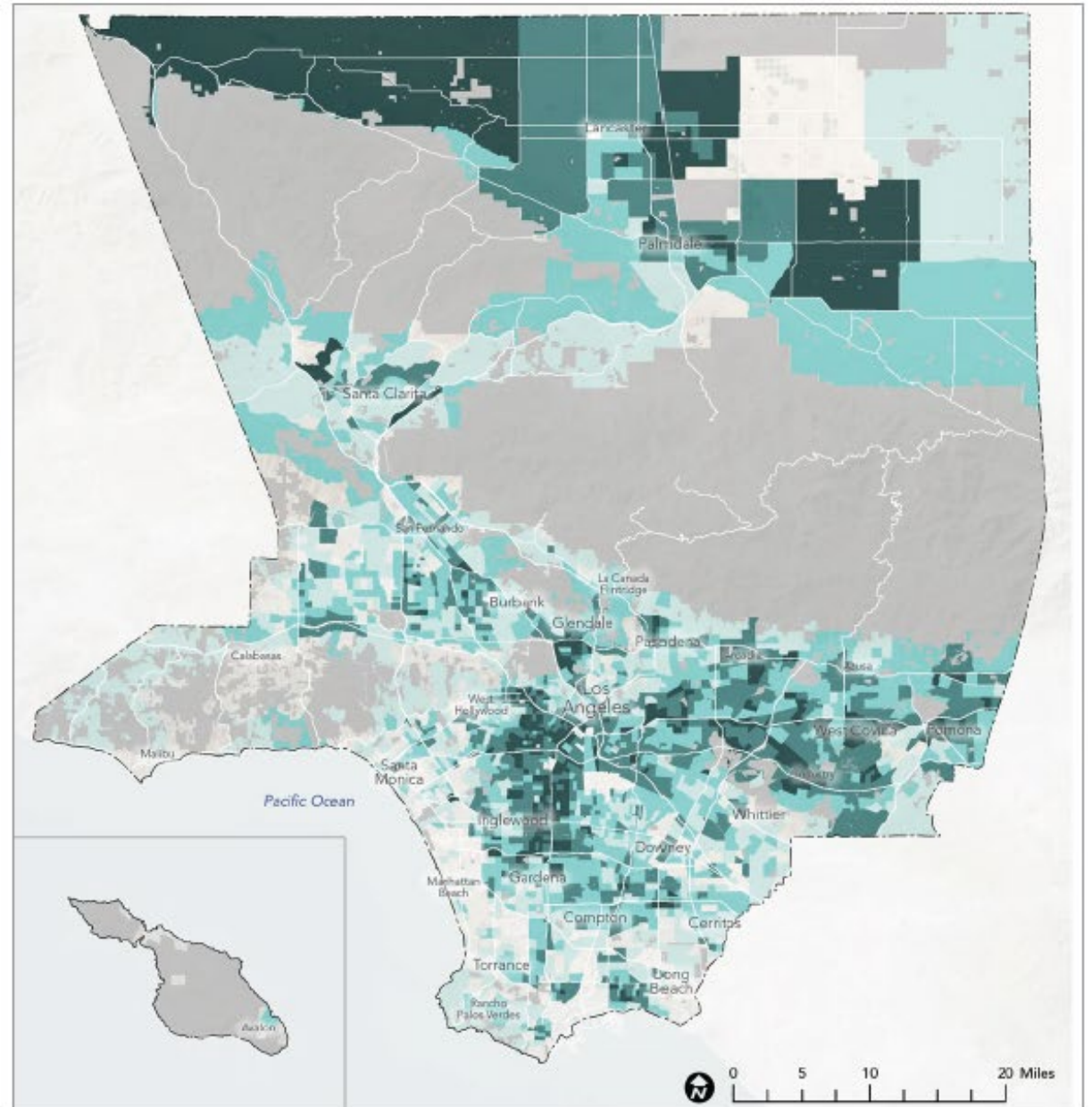
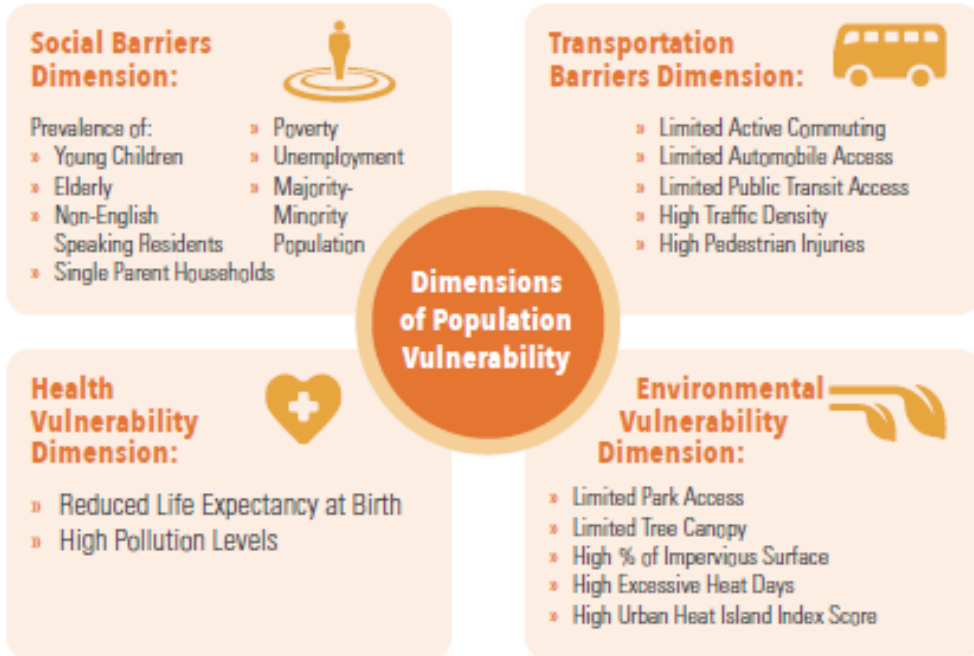
Digital and In-Person Workshops

Project Website

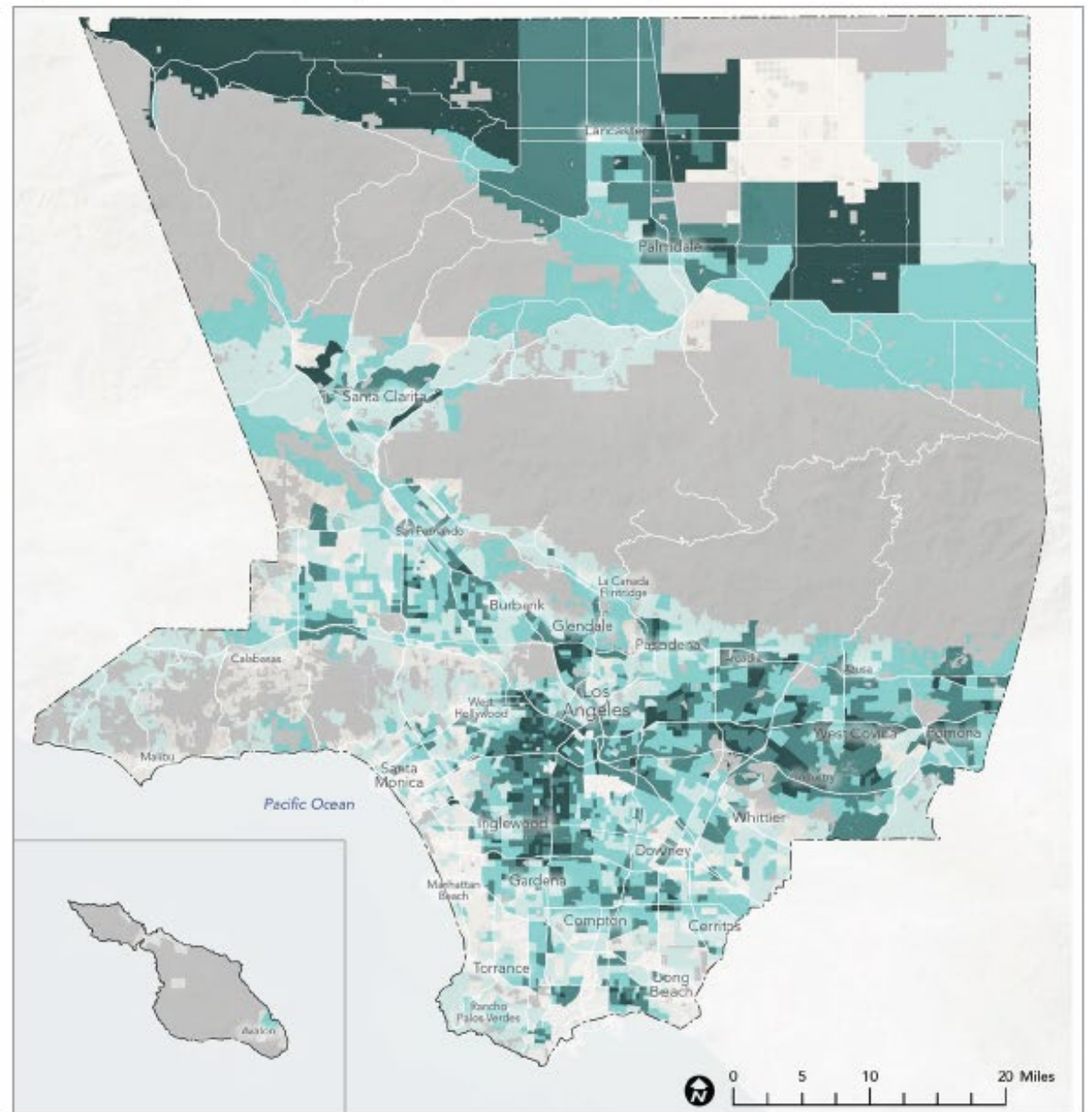
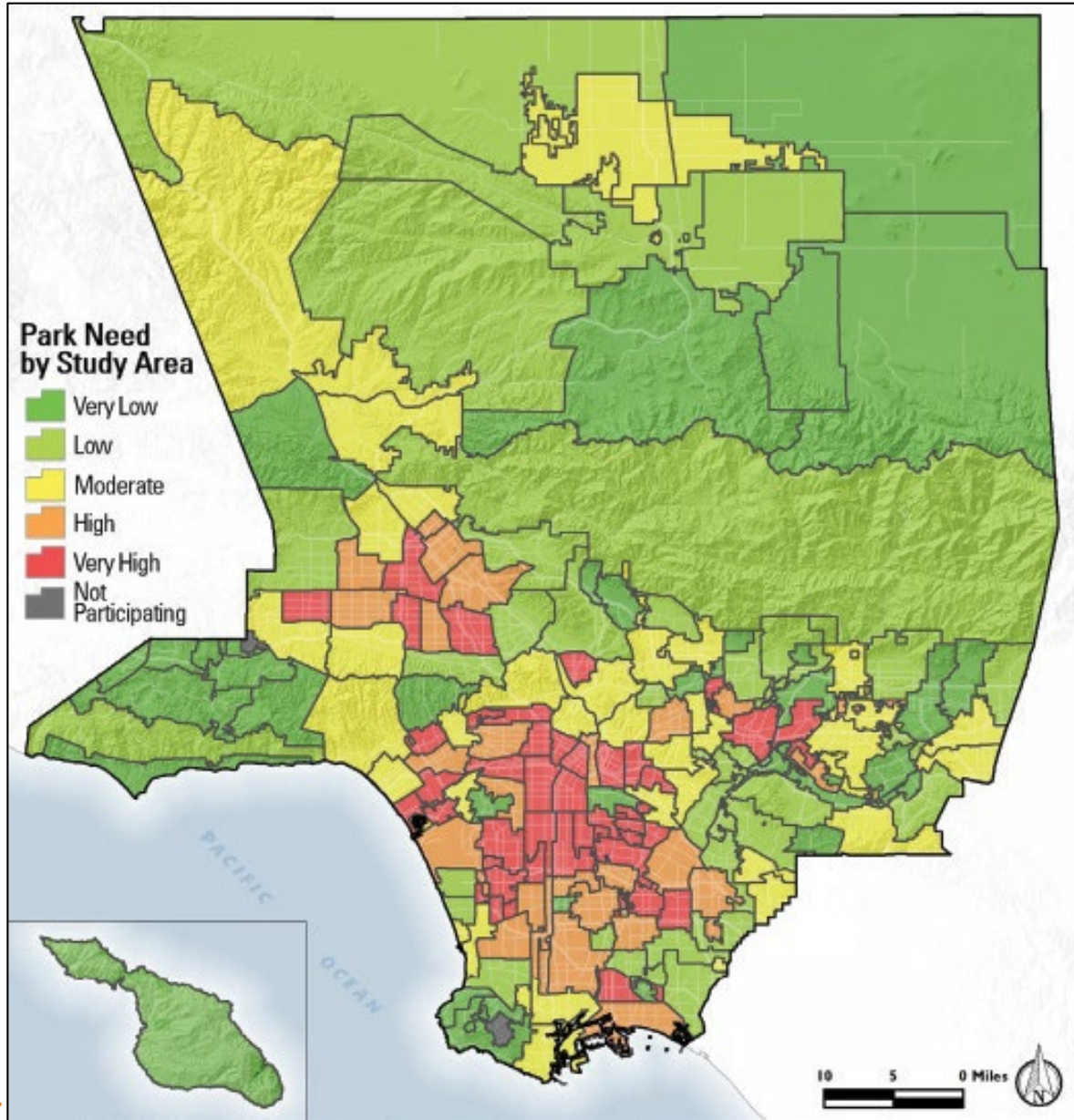
Key Findings



POPULATION VULNERABILITY

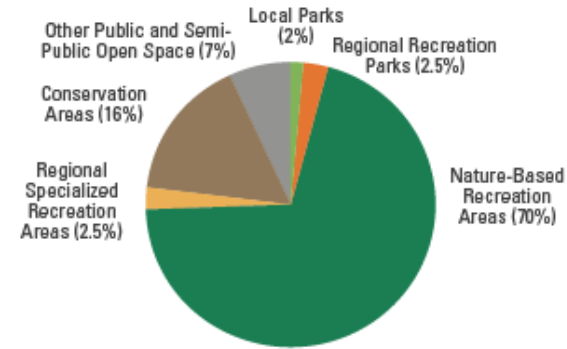


Park Need Level and Population Vulnerability



REGIONAL RECREATION

► Regional Recreation and Conservation Areas in LA County



38%
of LA County's
total land area



998,301
acres



99
acres per
1,000 County
residents

REGIONAL SITE DEFINITIONS

CONSERVATION AREA (869 SITES/163,000 ACRES)

Primary Purpose: Habitat, Wildlife and Resource Conservation

Lands that are protected from development for the purpose of conserving sensitive habitat, wildlife and/or natural/cultural resources. Recreational access to these natural areas is limited or prohibited.

NATURE-BASED RECREATION AREA (477 SITES/713,000 ACRES)

Primary Purpose: Nature-Based Recreation and Education

Formal and informal parks and open spaces of any size that primarily provide opportunities for nature-based recreation and education. Amenities may include visitor centers, trails, picnic areas, campsites, access to natural water bodies, wildlife viewing areas, interpretive elements and others.

REGIONAL RECREATION PARK (17 SITES/26,000 ACRES)

Primary Purpose: Formal Outdoor Recreation: Multi-Use

Parks that are over 100 acres and contain at least three recreation amenities such as athletic courts and fields, playgrounds, and swimming pools.

REGIONAL SPECIALIZED RECREATION AREA (198 SITES/26,000 ACRES)

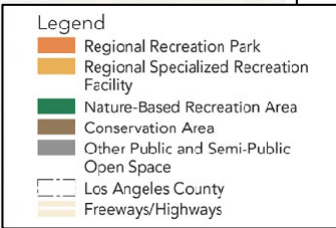
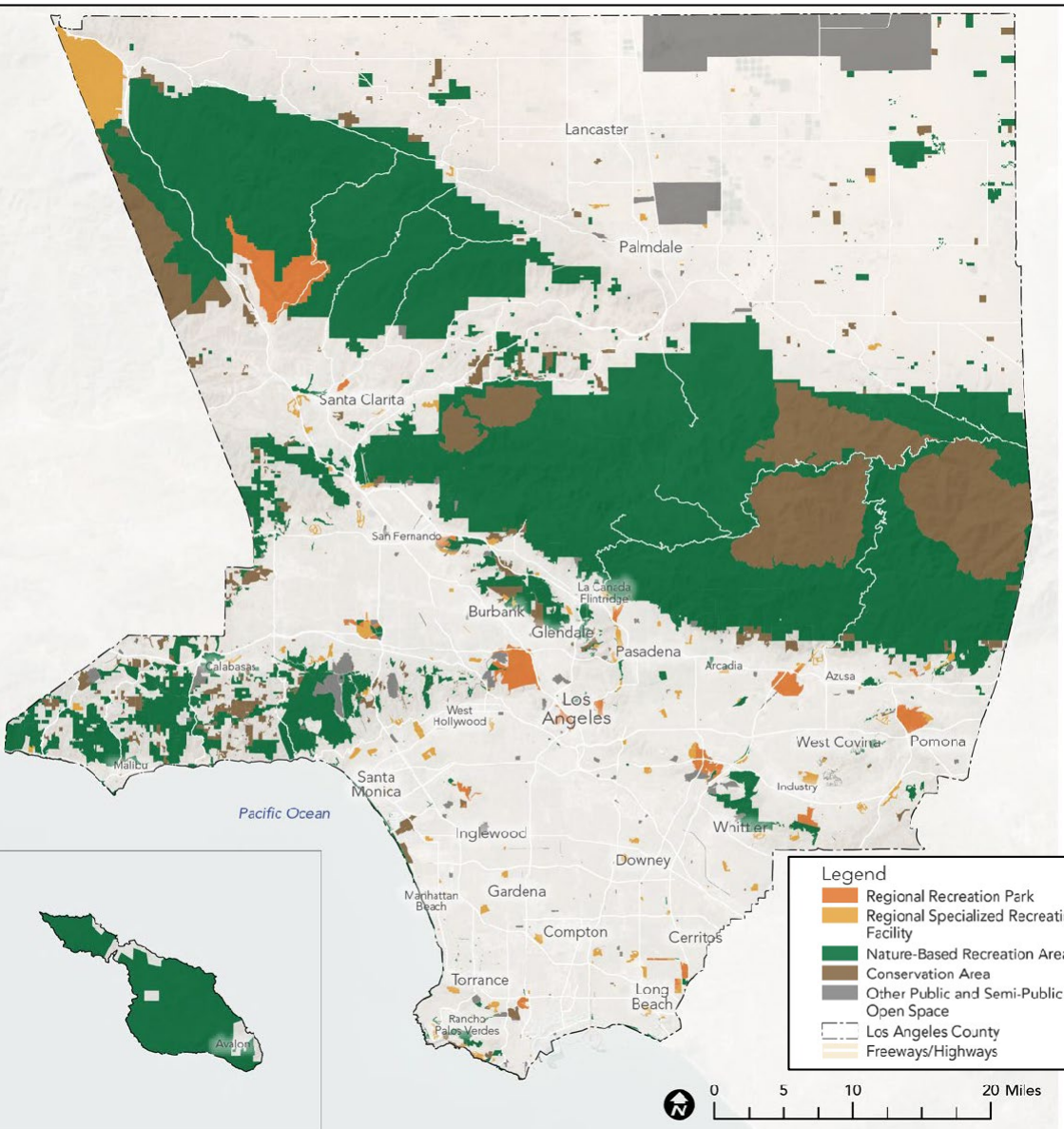
Primary Purpose: Formal Outdoor Recreation: Single-Use

Parks that contain a specialized recreation or cultural facility as the primary use. Examples include golf courses, historic sites, equestrian centers, and amphitheaters that are stand-alone (not contained within a larger park).

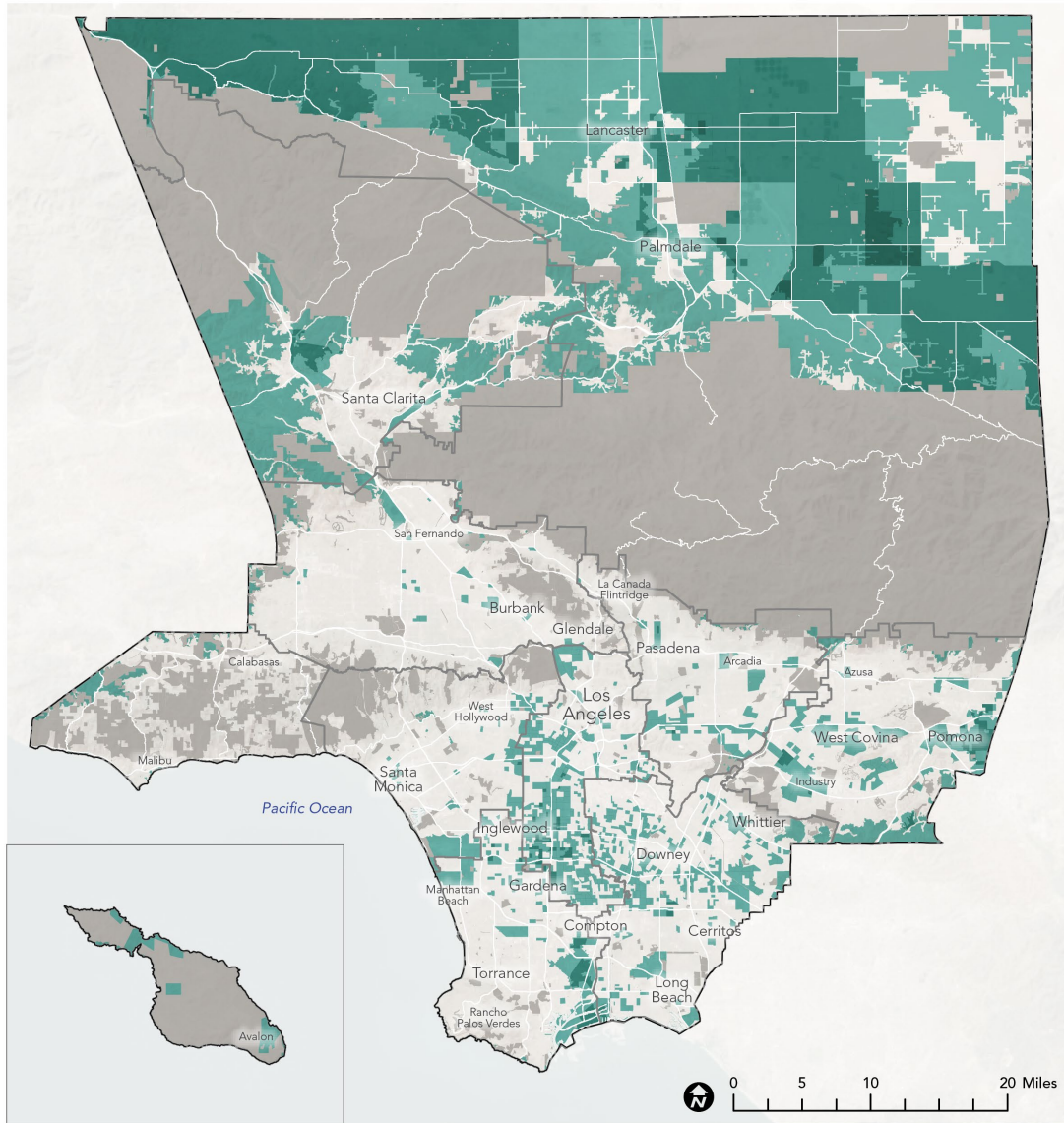
OTHER PUBLIC AND SEMI-PUBLIC OPEN SPACE (355 SITES/70,000 ACRES)

Primary Purpose: Institutional or Infrastructural Use

Lands that are held in public or institutional ownership and are typically used for infrastructure or institutional purposes. This includes undeveloped park land, utility corridors, cemeteries and other open spaces that are not designated for recreation or conservation.



Regional Recreation Priority Areas

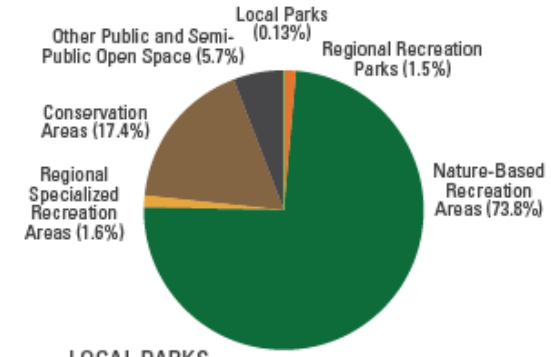
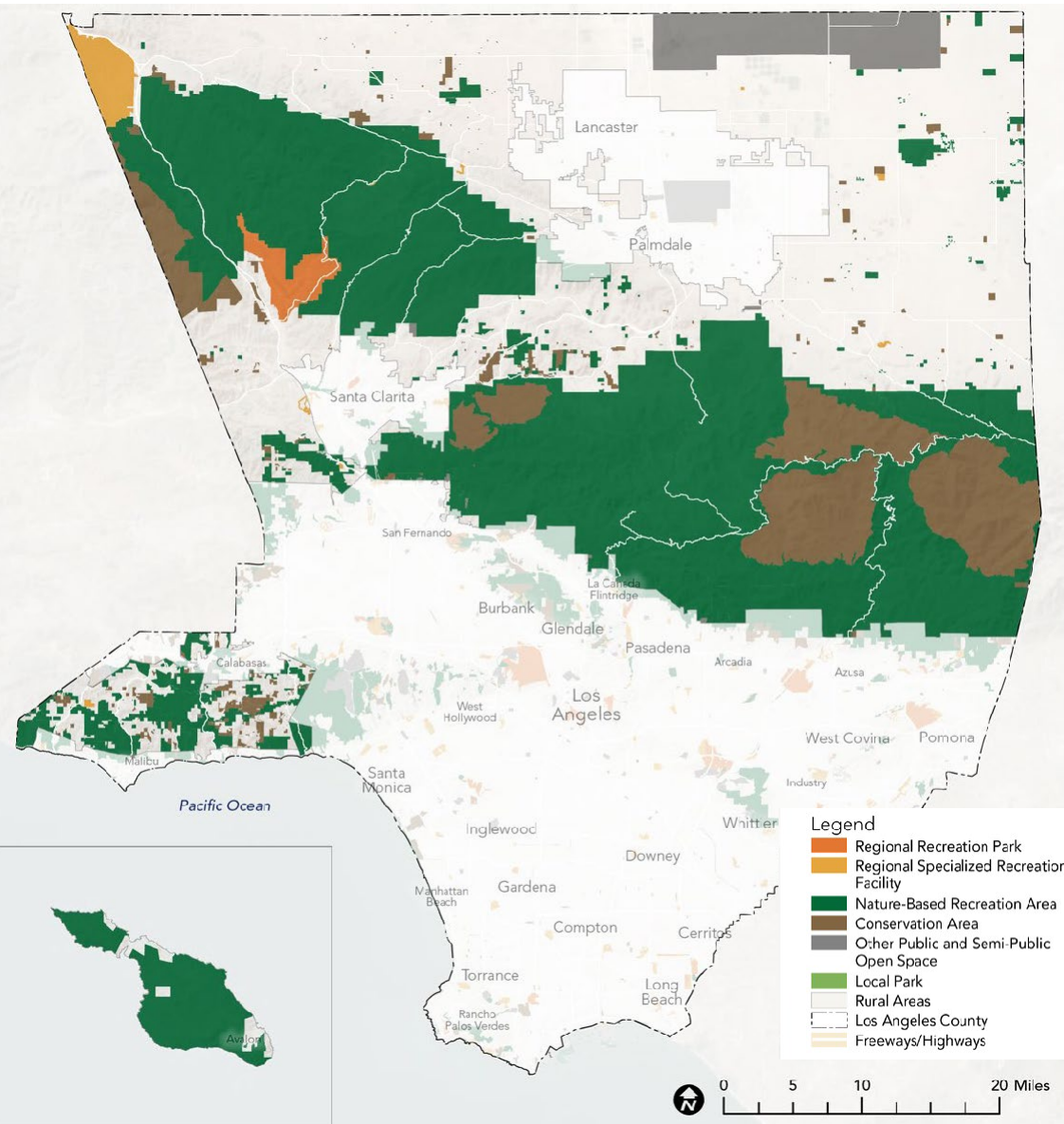


Legend

- ONE Indicator of Regional Recreation Need
- TWO Indicators of Regional Recreation Need
- THREE Indicators of Regional Recreation Need
- Regional Site Inventory
- Los Angeles County
- Freeways/Highways

Priority Areas for Increasing Access to Regional Recreation

RURAL RECREATION



- LOCAL PARKS
1,096 acres
- REGIONAL RECREATION PARKS
12,655 acres
- NATURE-BASED RECREATION AREAS
635,512 acres
- REGIONAL SPECIALIZED RECREATION AREAS
13,316 acres
- CONSERVATION AREAS
149,952 acres
- OTHER PUBLIC AND SEMI-PUBLIC OPEN SPACE
49,012 acres

Recreation and Conservation Land within rural Los Angeles County



► *Local Park Metrics*

1,097
ACRES OF LOCAL PARK AREA

6.7
6.7 LOCAL PARK ACRES PER 1,000 RESIDENTS

► *Regional Recreation Park Metrics*

12,655
ACRES OF REGIONAL RECREATION PARK AREA

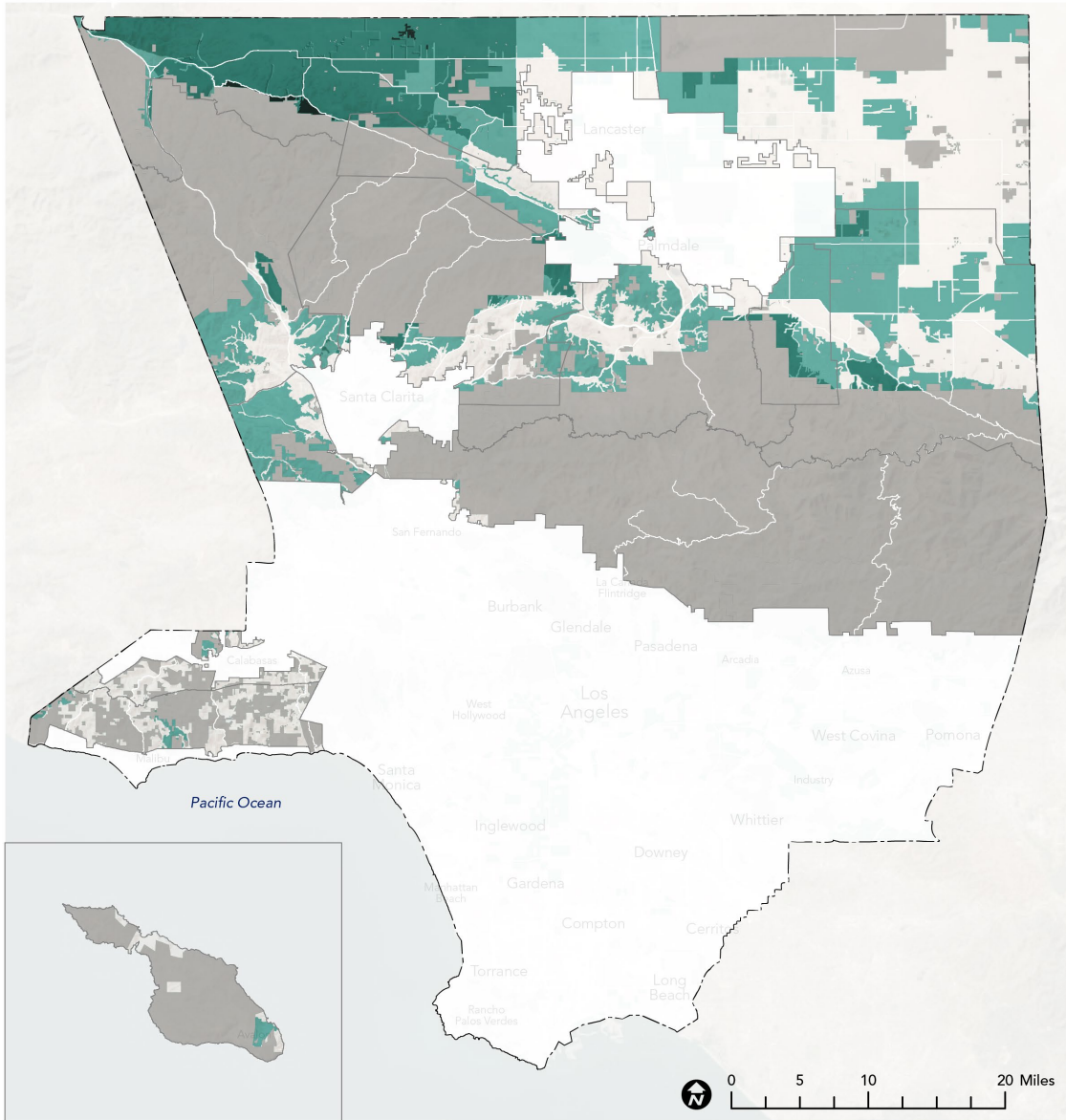
77.4
ACRES OF REGIONAL RECREATION PARK AREA PER 1,000 RESIDENTS

► *Nature-Based Recreation Area Metrics*

635,512
ACRES OF NATURE-BASED RECREATION AREA

3,889
NATURE-BASED RECREATION AREA ACRES PER 1,000 RESIDENTS

Rural Recreation Priority Areas



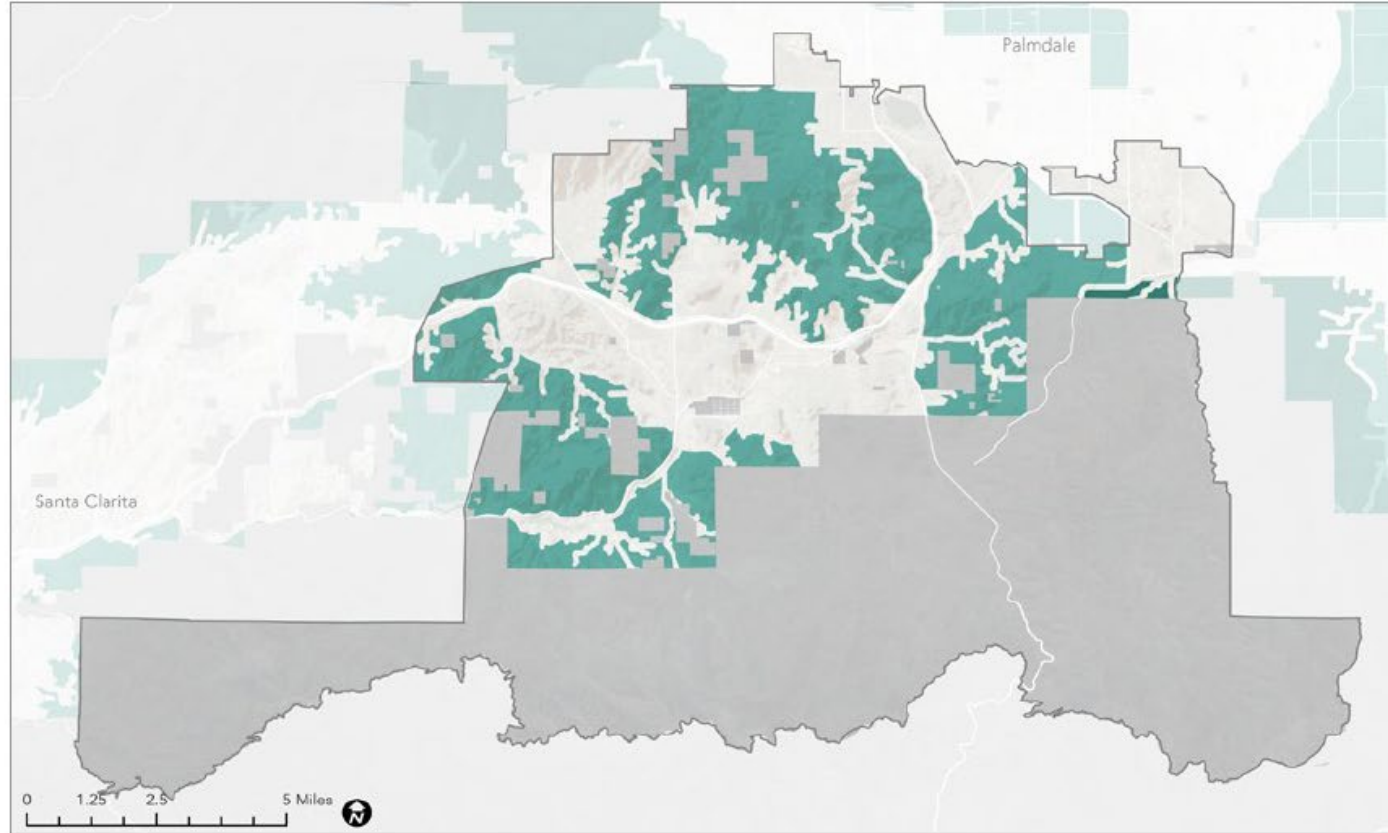
Legend

- ONE Indicator of Rural Recreation Need
- TWO Indicators of Rural Recreation Need
- THREE Indicators of Rural Recreation Need
- Rural Site Inventory
- Rural Areas
- Los Angeles County
- Freeways/Highways

Priority Areas for Increasing Access to Rural Recreation

Acton

RURAL RECREATION PRIORITY AREAS



Legend

- | | |
|--|--|
| Areas with ONE Indicator of Rural Recreation Need | Rural Site Inventory |
| Areas with TWO Indicators of Rural Recreation Need | Acton/South Antelope Valley Rural Study Area |
| Areas with THREE Indicators of Rural Recreation Need | Los Angeles County |
| | Major Roads |

Areas with:



High Levels of Social and Transportation Barriers



High Levels of Health and Environmental Vulnerability



Areas of High Rural Recreation Priority



Low Proximity to Rural Recreation Sites



Proximity to Fewest Recreation Opportunity Types

Rural Recreation Priorities

COMMUNITY NEEDS:

Priorities for Improving Rural Park Access and Experiences



TRANSIT OPTIONS

Improved and more frequent public transit service, carpools and shuttle options to parks.



INCREASED PARKING

Affordable parking options with ample space for horse trailers and electric car charging stations.



MORE SHADE

Shaded seating, play areas and walking trails, and shaded greenbelts between and around parks.



ACCESS TO WATER

More hydration stations for people and animals, and additional water facilities and features like pools and splash pads to keep residents cool in hot months and provide swimming lessons.



ENHANCED SAFETY MEASURES

Improved lighting at parks, more desert walking paths, and better maintenance of trailheads.



BETTER ACCESS TO INFORMATION

More information about events at local parks, mini-transit (like Metro Micro) to parks and walking and hiking opportunities at wildlife sanctuaries. More publicity about community workshops and other opportunities to provide feedback.



ENHANCED SIGNAGE

Signage maintained and provided in multiple languages, as well as additional interpretive and wildlife identification signage needed along trails.



ADA ACCESSIBILITY

Trails and parks with better wheelchair and disabled access, and playground equipment that is accessible.



NATIVE AMERICAN AND TRIBAL ACCESS

Privacy for ancestral practice, and land access for gatherings and events.



MORE CULTURAL EVENTS AND ACTIVITIES

More community events like art shows and concerts.



IMPROVED MAINTENANCE AND INFRASTRUCTURE

Better upkeep of restroom facilities, improved lighting on streets and paths, trash and vegetation overgrowth removal in parks and on trails.



ENHANCED TRAILS AND TRAIL SAFETY

Protected and safe bike trails to connect users to parks, and conflicts between trail users addressed to ensure trails are safe for horses, riders and other users.



MORE FACILITIES FOR EQUESTRIAN USE

A staging area for horses and trailers at trailheads with trees, water, and picnic tables, and a place to host horse shows and equestrian events.



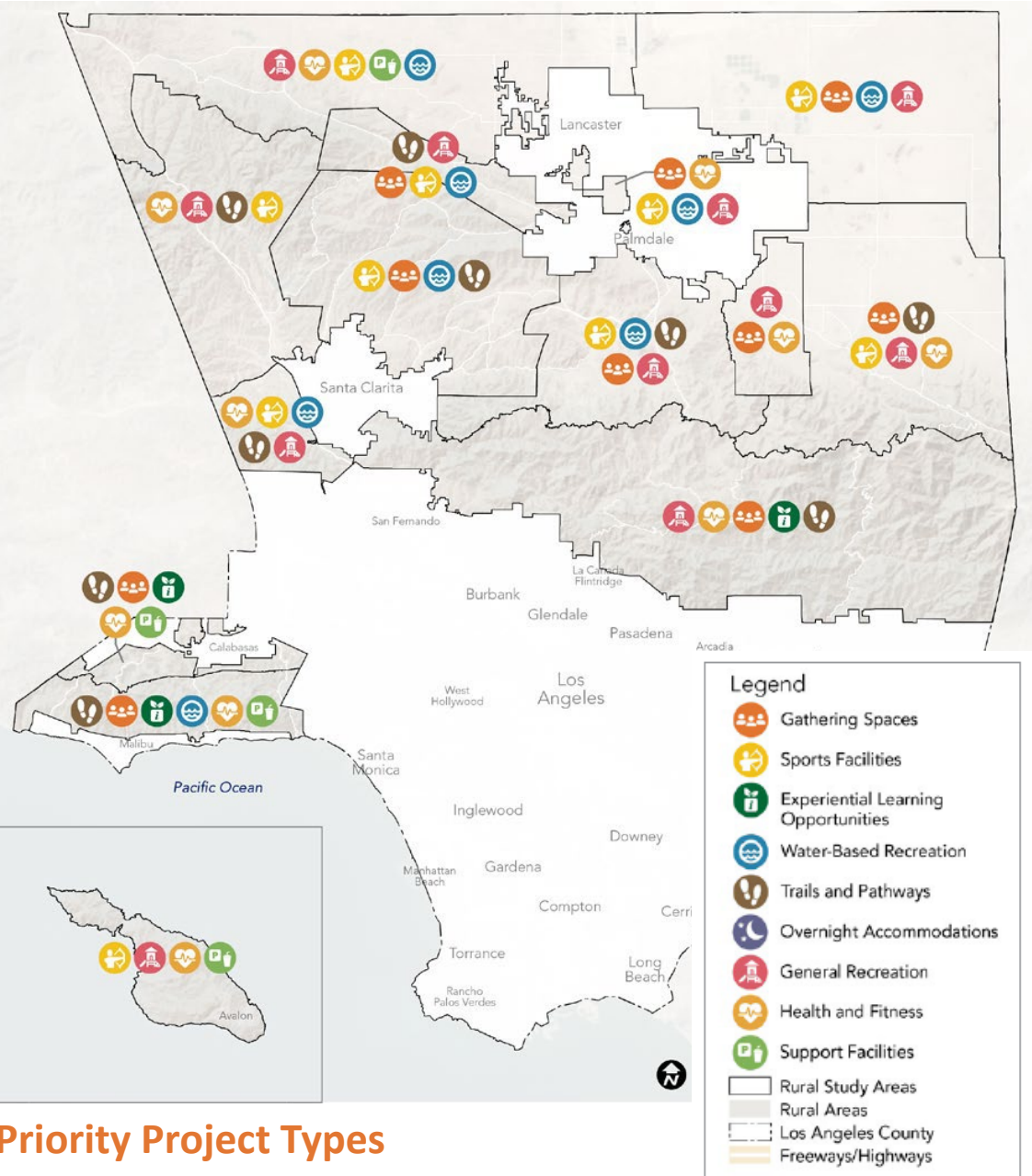
ADDITIONAL PROGRAMS

More park activities and programs available to all ages.



EXPANDED RECREATION FACILITIES

More tennis and pickleball courts, swimming facilities.



Priority Project Types

Acton - Priority Project Types

PRIORITY PROJECT TYPES



PRIORITY PROJECTS

- » Swimming Pool
- » Skatepark
- » Splash Pad
- » Tennis Court
- » Walking Path
- » Shade Trees and Structures
- » Dog Park
- » Trails

Legend

- | | |
|-------------------------------------|--------------------------|
| Gathering Spaces | Overnight Accommodations |
| Sports Facilities | General Recreation |
| Experiential Learning Opportunities | Health and Fitness |
| Water-Based Recreation | Support Facilities |
| Trails and Pathways | |

Map source: PNA, 2016

Note: Priority projects are based on lists of priority projects from the 2016 PNA and updated public input gathered as part of 2022 RRE.



Draft Recommendations



DRAFT RECOMMENDATIONS



FUNDING PRIORITIES

- **Develop an advocacy platform for legislation that increases federal and state funding to implement solutions to address the needs identified in the PNA+ Final Report.**
- **Incorporate findings from the PNA+ Final Report into Measure A grant-making process, including update of the Grants Administration Manual.**
- **Initiate new funding mechanisms to expand efforts to restore degraded lands for park use and address regional and rural park needs identified in the PNA+ Final Report.**
- **Work with the State of California and other grantors to update scoring tools and methodologies for parks-related grant programs to address needs identified in the PNA+ Final Report.**



PARK, TRAIL AND OPEN SPACE PROVISION

- **Update DPR's parkland acquisition strategy based on findings of the PNA+ Final Report**
- **Address climate resiliency through additional multi-benefit park projects.**
- **Implement priority trail projects as identified in adopted trail plans.**
- **Develop and implement creative solutions to address the park and recreation needs of rural communities.**



COLLABORATION AND COORDINATION

- **Convene public park agencies and conservancies in Los Angeles County to coordinate regional parkland initiatives and implement recommendations of the PNA+ Final Report.**
- **Expand the quarterly meetings of the countywide trail managers taskforce to coordinate interagency trail connectivity, practices and policies, signage, and network.**
- **Update the Los Angeles County General Plan to incorporate findings and recommendations of the PNA+ Final Report.**



DRAFT RECOMMENDATIONS



ACCESS AND INFORMATION

- Expand public transit to parks, open space, trails, and beaches.
- Formalize partnerships with First Peoples to pursue opportunities for acknowledgement and stewardship of land.
- Update and expand the Trails LA County website and app to additionally serve as a hub and an empowerment tool from which to advance equity and expand access to the regional trail system.
- Provide historically inclusive, eco-literate, and multilingual interpretive signage at parks, including natural areas and nature centers.



COMMUNITY ENGAGEMENT

- Prioritize community engagement for programs, services, and park development.
- Expand opportunities for community engagement.



CAPACITY BUILDING

- Recruit volunteers for core programming, such as out-of-school and sports programming, in high park need and/or vulnerable communities.
- Create career pathways, including training and workforce development opportunities, for jobs in nature education, resource protection, conservation, and outdoor access related fields.



Thank You



Questions?

Please contact:

Sean Woods, Chief of Planning: swoods@parks.lacounty.gov

Clement Lau, Departmental Facilities Planner: clau@parks.lacounty.gov

Website:

lacountyparkneeds.org

